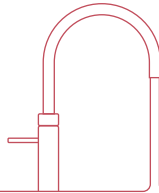


# Installation guide PRO3

Before installing read this guide first



**Quooker®**

## Introduction

### **The operation of the Quooker PRO3**

The Quooker system consists of a small tank which is connected to the cold water supply under the sink and to the Nordic single tap, the Fusion tap or the Flex tap. Both boiling water and mixed water can be drawn off from the Fusion and Flex tap. Inside the tank the water is heated electrically to approx. 110°C and is kept at this temperature. The Quooker PRO3 has a capacity of 3 litres. Before the water leaves the tank it is purified by the HiTAC® water filter (High Temperature Activated Carbon).

The Nordic single tap, the Fusion tap and the Flex tap are fitted with a childproof push-and-turn handle (see 'Tips for use'), which is clearly recognisable by its industrial ribbing. The Nordic single tap is height adjustable to guarantee safe use. Both the Fusion tap and the Flex tap are well insulated. Despite all the safety features incorporated in the product, anyone using the Quooker system must keep in mind the risks of using boiling water in general. Incorrect use can lead to injury. Therefore always read the manual carefully before use.

### **Installation, maintenance and warranty**

The Quooker can be installed in almost any location provided there is sufficient space for the tank as well as a 13 amp socket, water supply and waste pipe.

The Quooker tank must be fitted in an upright position. If the tank is to be fitted in a cabinet with drawers, an optional bracket can be purchased to suspend the tank from the cabinet wall.

The HiTAC® filter inside the tank should be changed once every 3-5 years depending on your water hardness. If you live in a hard water area, lime scale will collect at the bottom of the tank and will need to be cleaned out by one of our engineers approximately once a year depending on usage and the quality of the water in your area. Alternatively, you can install a suitable descaling system. This system must not reduce the pH level of the water below 7 or remove all the minerals from the water (reverse osmosis) as this can be harmful to the tank and would void the warranty. Suitable descaling systems are also available directly from Quooker as an optional extra.

The warranty period is two years and covers parts and labour. It does not cover issues resulting from insufficient lime scale maintenance.

## **Users**

The Quooker tap can be used by children above the age of eight and people with diminished physical, sensory or intellectual abilities provided they are supervised or have been instructed on the safe use of the device. Inform people who are unfamiliar with the Quooker system about safe use and the possible dangers associated with the use of the boiling-water tap. Please note: incorrect use may result in injury. Prevent children from using the tap as a toy and do not allow children to clean or maintain the product unsupervised. Keep the plug out of reach of small children.

The Quooker system is suitable for household use and commercial use such as in staff kitchens at shops, offices, farms and other business premises and for use by visitors at hotels, motels, bed & breakfasts and other residential accommodation.

Always follow the installation method described in the manual. Avoid spilling water on the plug. If defective, the power plug may only be replaced by a qualified technician. Make sure you let the tank cool off adequately before disconnecting it. The fastest way to do this is as follows: turn off the Quooker, but leave the plug in the socket. Then open the boiling-water tap and turn it off once the water runs cold. You can find a more detailed explanation for disconnecting the tank in chapter F.

The installation manual can also be found on our website [quooker.hk](http://quooker.hk)

## Declaration of conformity

Quooker Nederland B.V., Staalstraat 13, 2984 AJ Ridderkerk (The Netherlands) herewith declares, on our own responsibility, that the product Quooker PRO3 is in accordance with the conditions of the following directives:

- 2014/35/EU Low Voltage Directive (LVD)
- 2011/65/EU Restriction of Hazardous Substances (RoHS) Directive
- 2014/30/EU Electromagnetic Compatibility Directive (EMCD)
- 2009/125/EC Ecodesign energy-related products Directive
- 2014/68/EU Pressure Equipment Directive

and complies with the following standards:

General product safety household and similar electrical appliances

EN 60335-1:2012 + AC:2014 + A11:2014

EN 60335-2-15:2002 + AC:2005 + A1:2005 + AC:2006 + A2:2008 + A11:2012 + A11:2012/AC:2013  
+ EN 60335-2-15:2016

EN 60335-2-21:2003 + A1:2005 + AC:2007 + A2:2008 + AC:2010

Public exposure to electromagnetic fields (EMF)

EN 62233:2008 + AC:2008

Electromagnetic compatibility (EMC)

EN 55014-1:2017 + EN 55014-1:2006 + A1:2009 + A2:2011

EN 55014-2:2015 + EN 55014-2:1997 + AC:1997 + A1:2001 + A2:2008

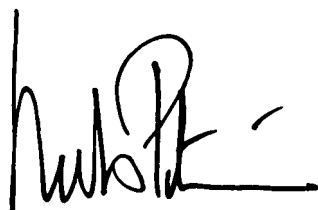
EN 61000-3-2:2014

EN 61000-3-3:2013

Restriction of hazardous substances

EN 50581:2012

The Netherlands, Ridderkerk, January 2021

A handwritten signature in black ink, appearing to read 'Niels Peteri', with a horizontal line extending from the end of the signature.

Niels Peteri, Director

## Technical specifications

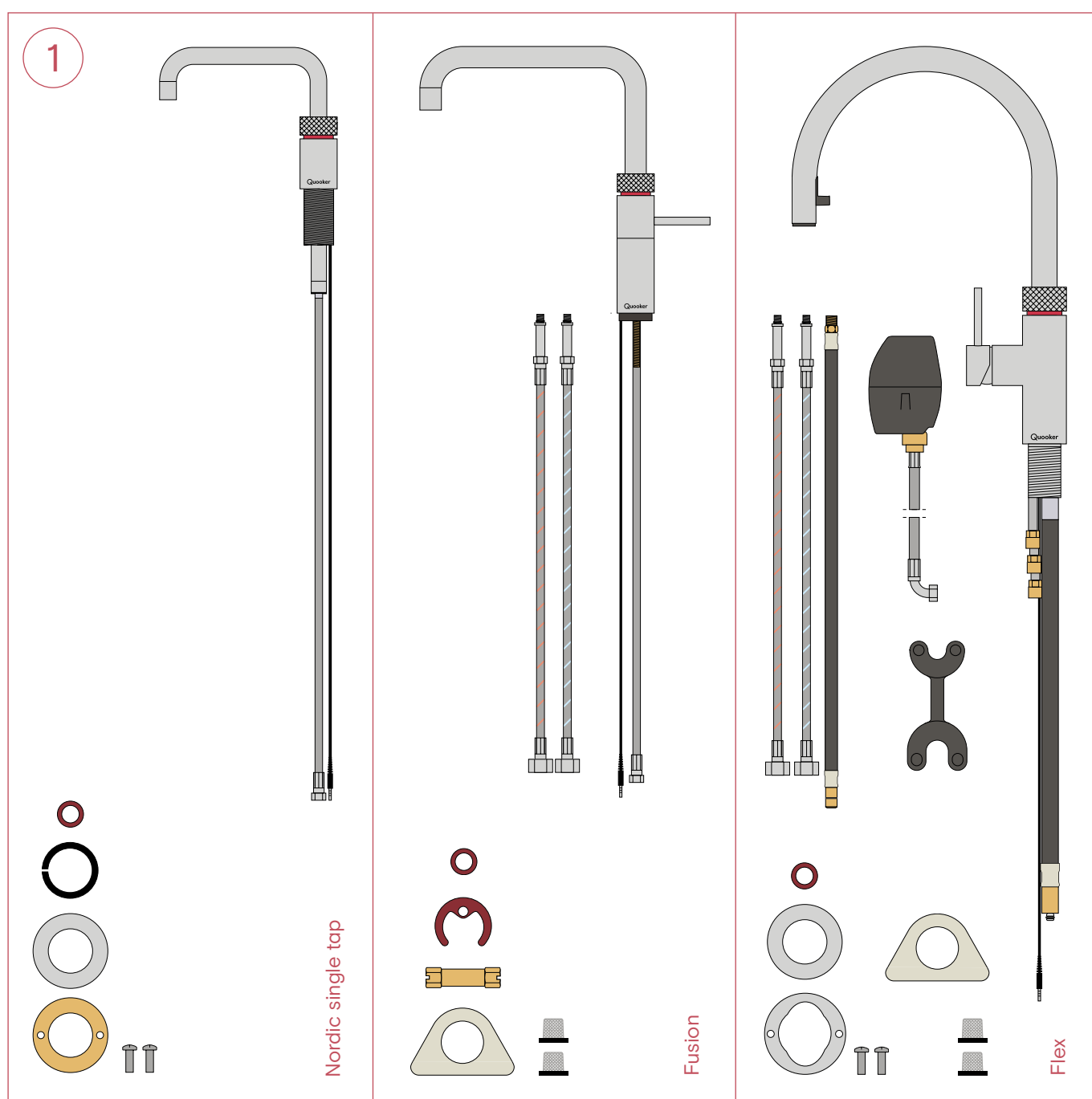
| Tank                      | PRO3  |
|---------------------------|---|
| Voltage                   | 230 V   |
| Wattage                   | 1600 W  |
| Capacity                  | 3 litres  |
| Heating-up time*          | 10 minutes  |
| Standby power consumption | 10 W  |
| Tank height               | 46 cm   |
| Required working height   | 52 cm   |
| Tank diameter             | 15 cm   |
| Min. mains pressure       | 200 kPa (2 bar)   |
| Max. mains pressure       | 600 kPa (6 bar)   |
| Max. working pressure     | 800 kPa (8 bar)   |
| Mounting bracket optional | yes   |
| Safety features           | - maximum temperature fuse<br>- pressure relief valve 800 kPa (8 bar) |
| Water shut-off valve      | electric  |
| HiTAC® water filter       | High Temperature Activated Carbon                                     |

\*These are average values.

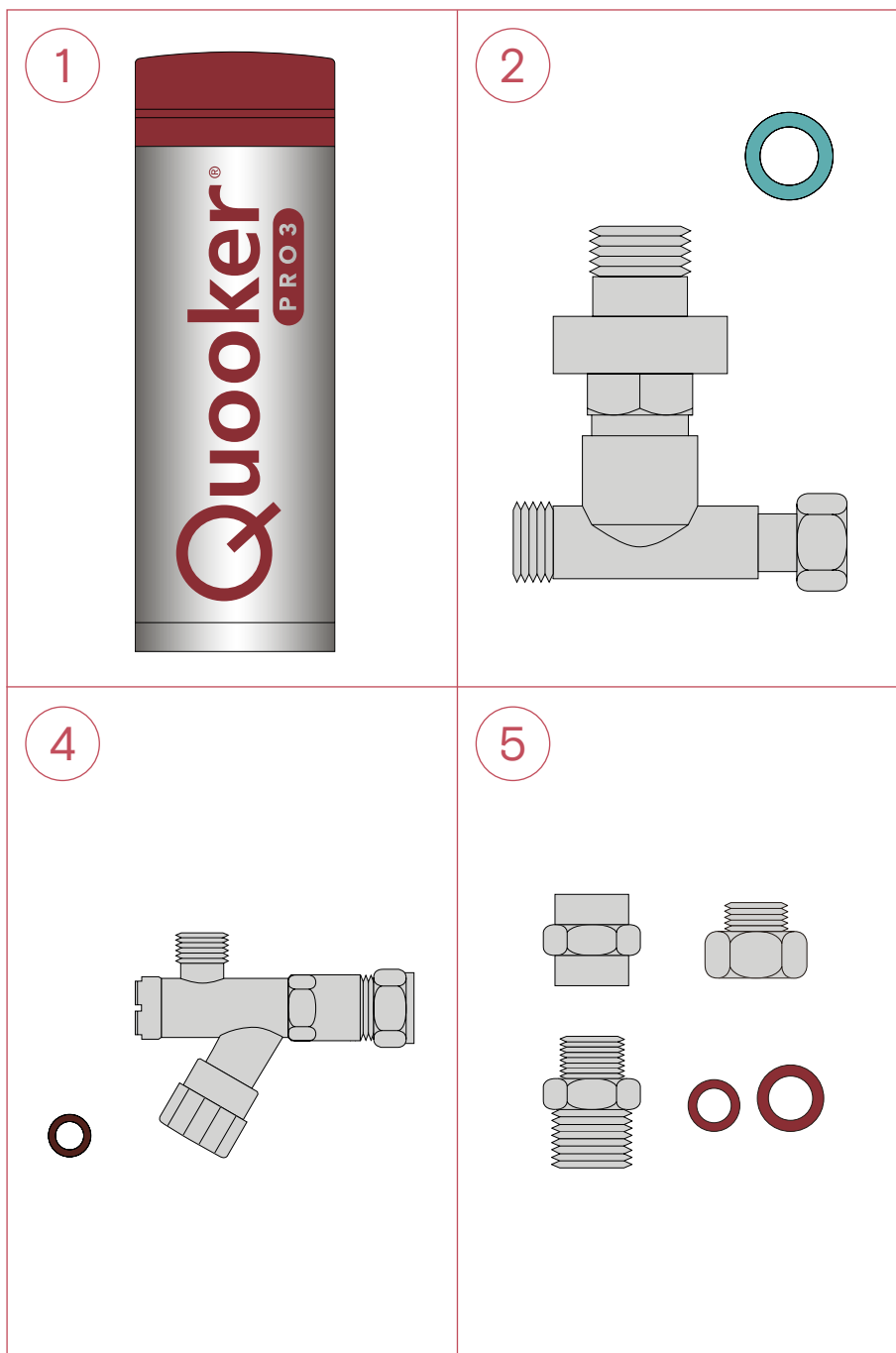
| Tap                        | Nordic<br>single tap | Fusion, Flex<br>and mixer tap |
|----------------------------|----------------------|-------------------------------|
| Tap hole size              | 32 mm                | 35 mm                         |
| Recomm. temp. mixing water | -                    | 60°C                          |
| Tap base ring available    | yes                  | yes                           |

## Contents of the pack

1. - Nordic single tap, packing ring, centring ring, steel ring, brass sink nut and two screws  
 - or Fusion tap, packing ring, brass fixing plate, fixing nut, white tap support (for thin work tops) and two inlet hose screens  
 - or Flex tap, hoses, fibre washer(s), steel washer, screw ring with two screws, coupling with boiling water hose, white tap support, two inlet hose screens and quick-release tool.



2. PRO3 tank
3. Quooker inlet valve with packing ring
4. Angle stopcock with filter and packing ring
5. Inlet couplings and packing rings



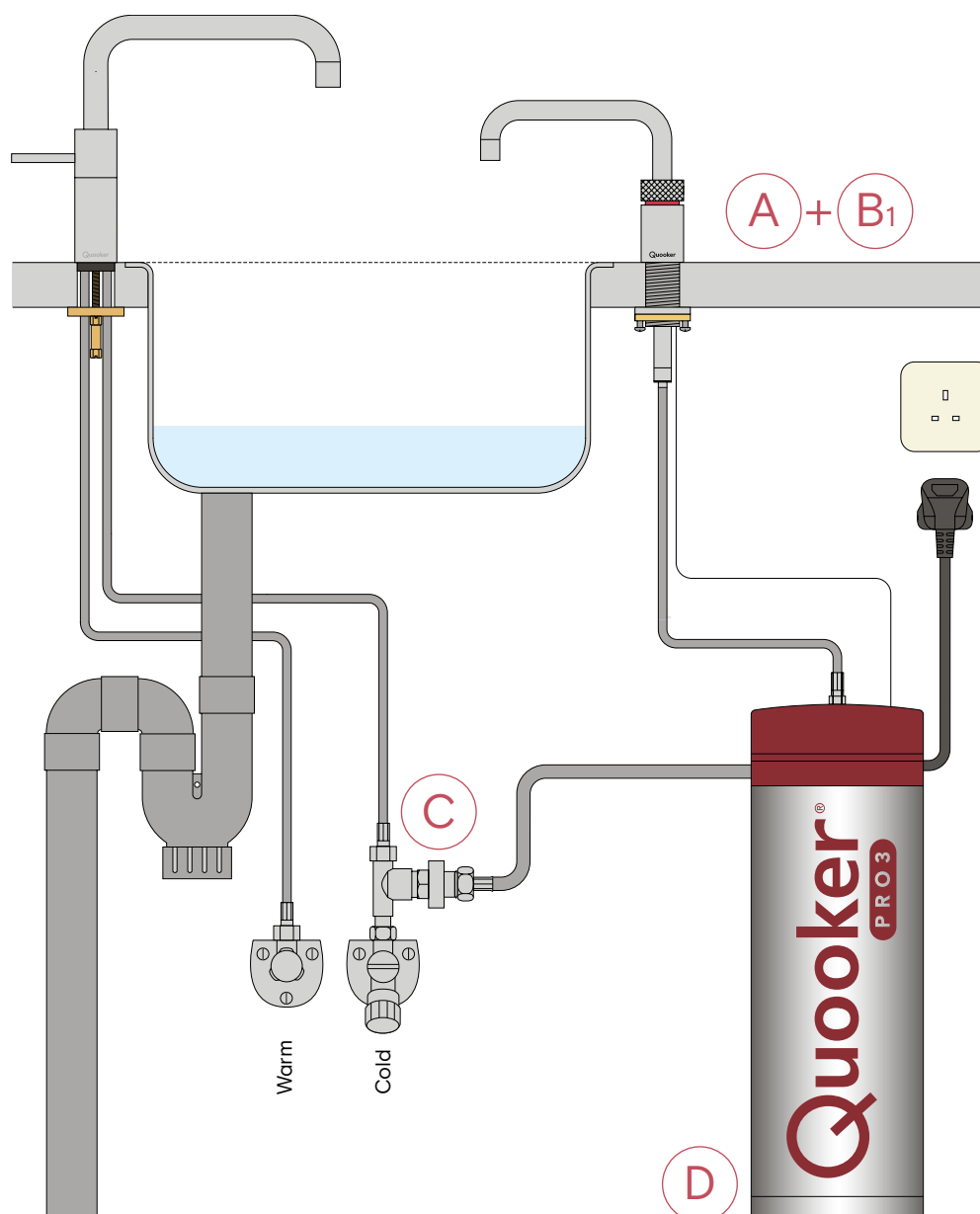
## Overview of Nordic single tap installation

It is recommended that you install the Quooker in the following order:

- A. Drilling hole
- B1. Fitting Nordic single tap
- C. Connecting water
- D. Connecting waste
- E. Connecting tank

Note: Bear in mind that the tank, inlet valve and socket must remain easily accessible for servicing.

For an overview of the Fusion tap installation, please refer to the next page and for the Flex tap to the page after that.





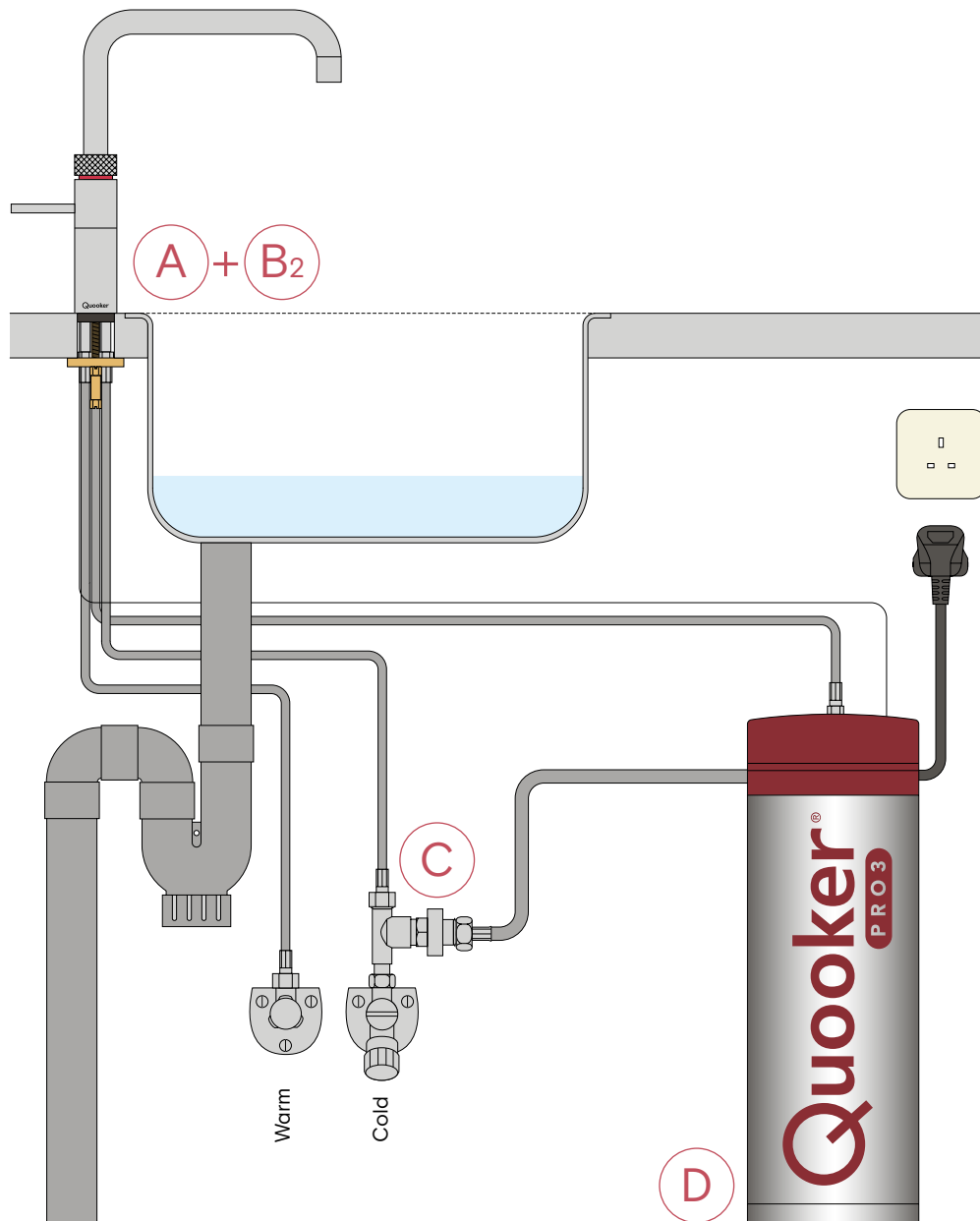
## Overview of Fusion tap installation

It is recommended that you install the Quooker in the following order:

- A. Drilling hole
- B2. Fitting Fusion tap
- C. Connecting water
- D. Connecting waste
- E. Connecting tank

Note: Bear in mind that the tank, inlet valve and socket must remain easily accessible for servicing.

For an overview of the Flex tap installation, please refer to the next page.

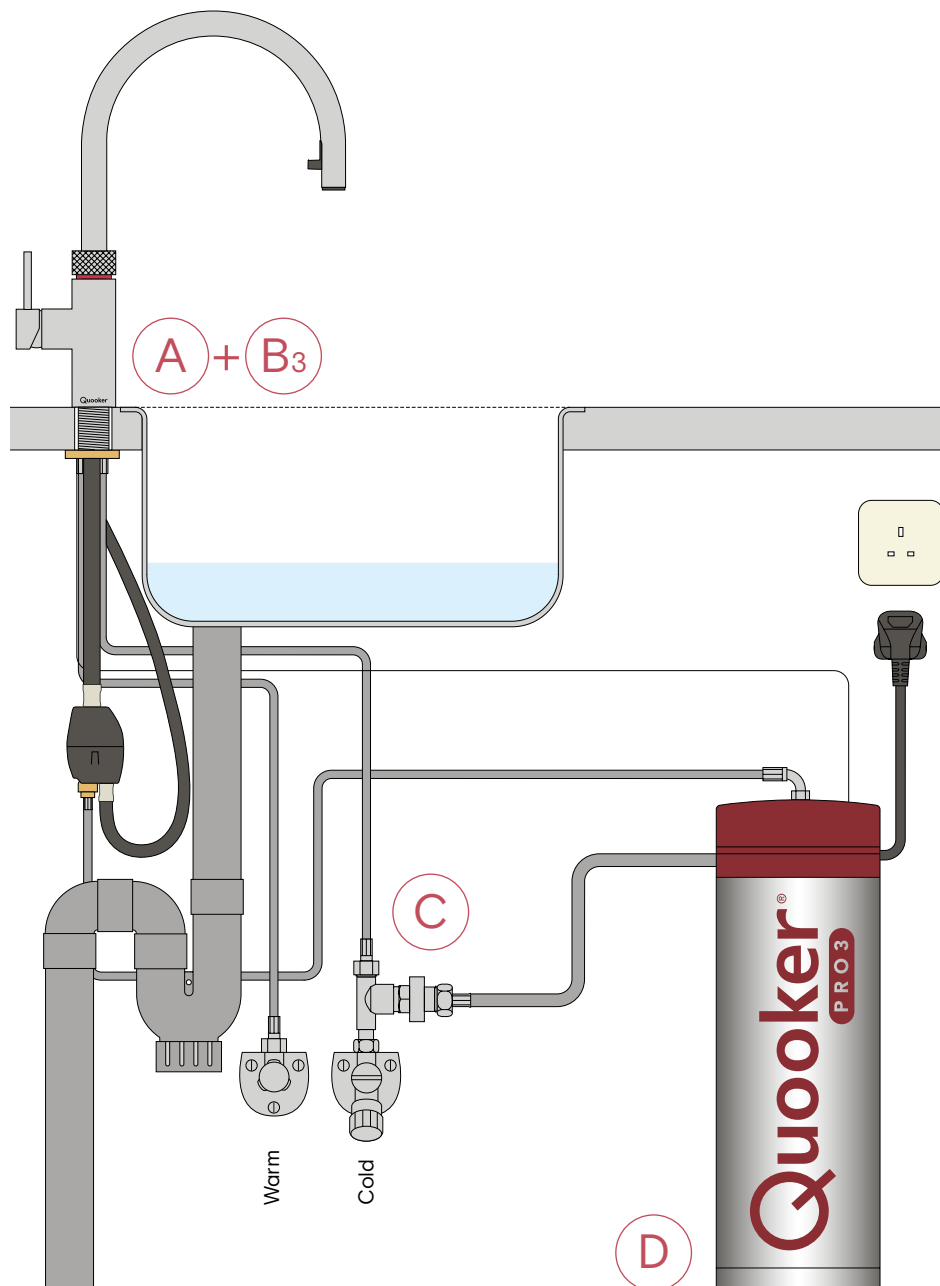


## Overview of Flex tap installation

It is recommended that you install the Quooker in the following order:

- A. Drilling hole
- B3. Fitting Flex tap
- C. Connecting water
- D. Connecting waste
- E. Connecting tank

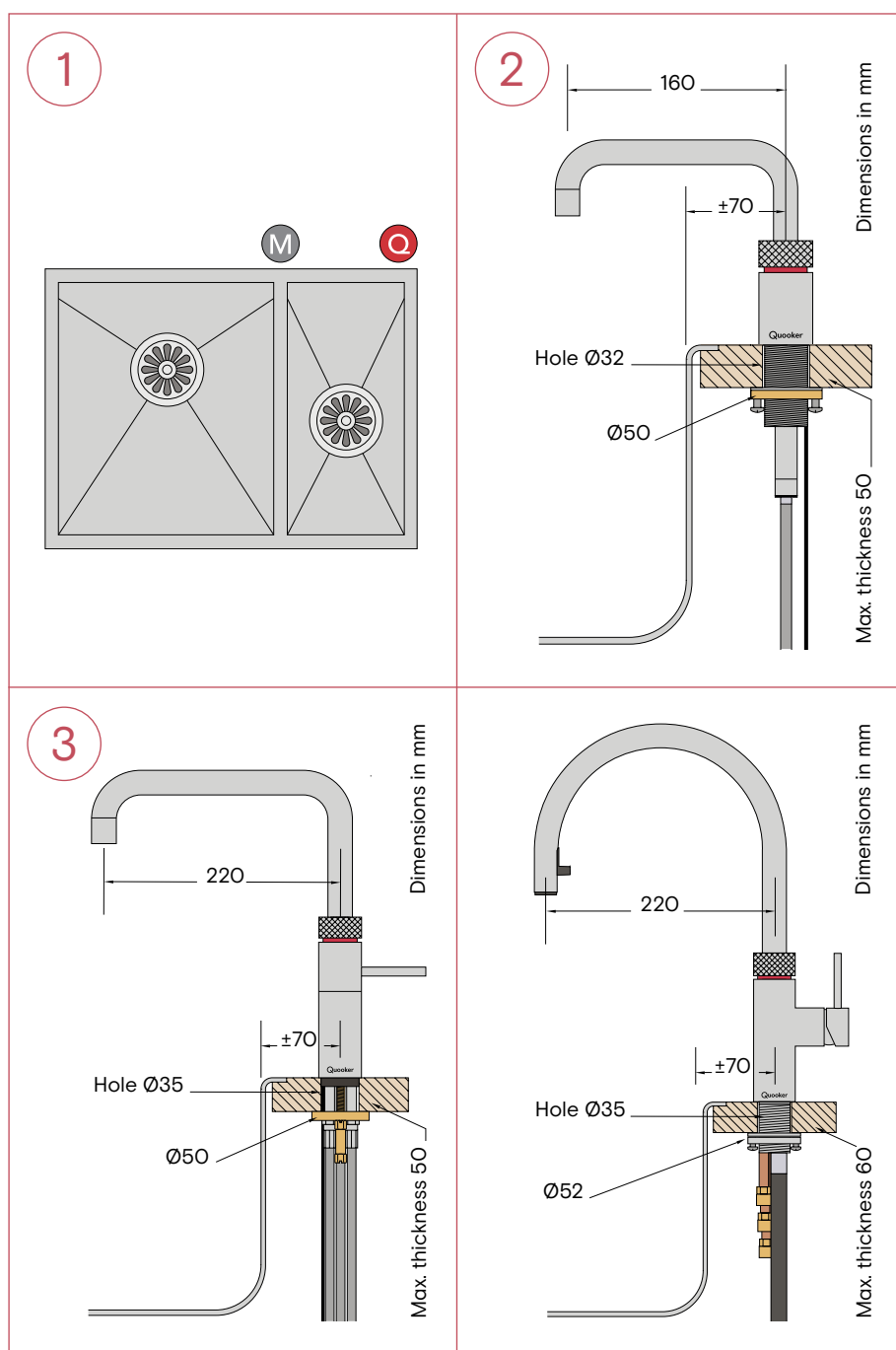
Note: Bear in mind that the tank, inlet valve and socket must remain easily accessible for servicing.



# A

## Drilling hole

- Note: The tap hole for the Nordic single tap should be 32 mm in diameter. The Fusion and Flex tap hole should be 35 mm in diameter.
- The Nordic single tap should ideally be positioned at the corner of the sink to enable use above the sink or the work top.
- Note: It must be possible to move the spout of the Nordic single tap freely up and down. When the spout is in its lowest position it projects ca. 25 cm below the work top. Bear this in mind when fitting the inlet combination, sockets and the like.
- Note: The Flex tap coupling must be able to move freely. When the hose is not withdrawn it hangs approximately 40 cm below the work surface top. Make allowances for this when fitting the inlet combination, power sockets and so forth.



### 1. Select position Nordic single tap

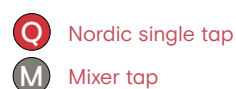
Select a suitable position for the Nordic single tap based on the type of sink and position of the mixer tap.

### 2. Drilling hole for Nordic single tap

Using the correct drill bit, drill a hole of 32 mm through the work top for the Nordic single tap. Note: For the Nordic mixer tap please refer to the separate guide. In the case of a hole of 35 mm or larger, use the centring ring provided.

### 3. Drilling hole for Fusion or Flex tap

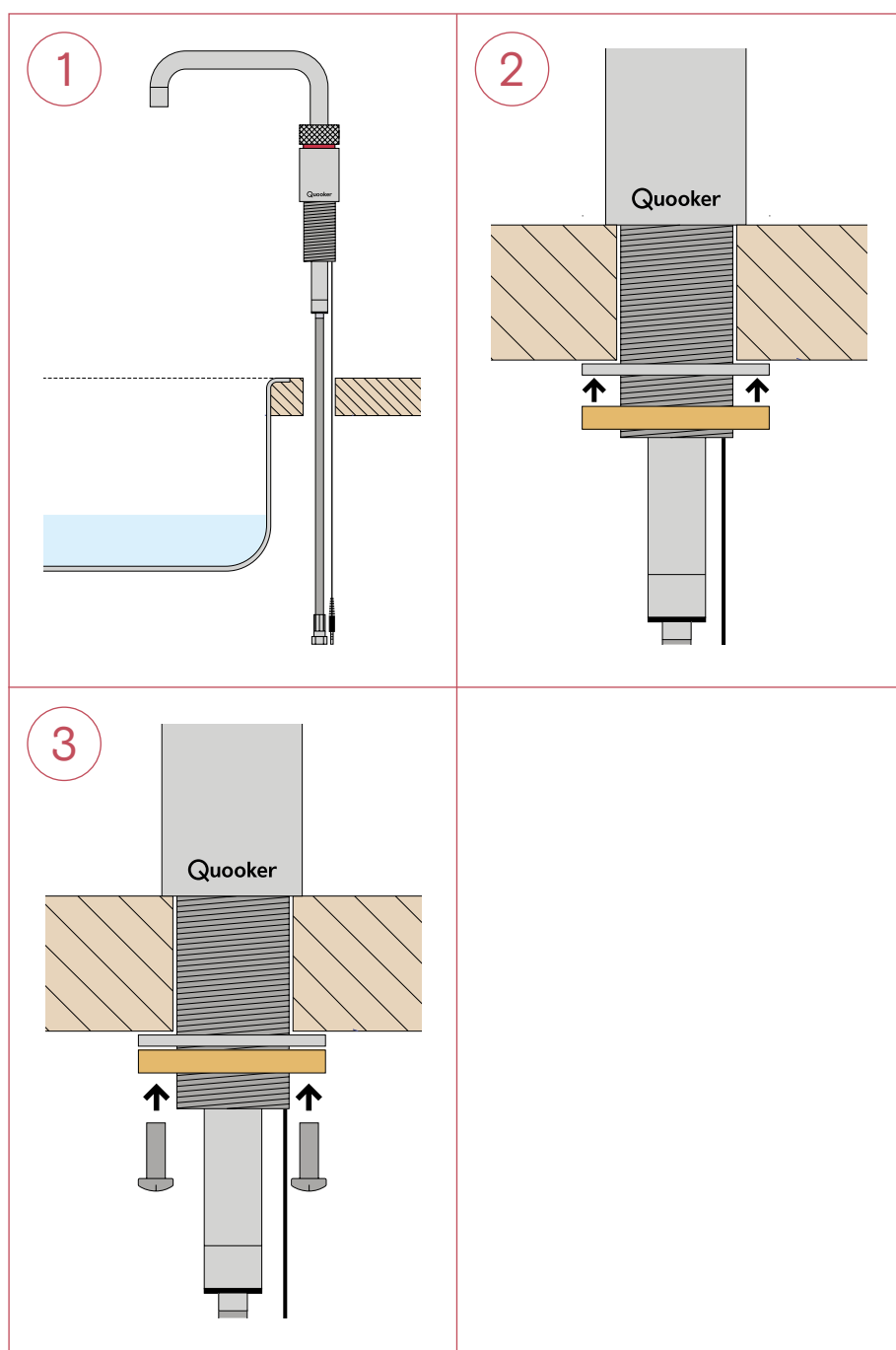
Select a suitable position for the tap. Using the correct drill bit, drill a hole of 35 mm through the work top. In this, take account of the range of the tap's spout from the centre of the tap hole.



# B1

## Fitting Nordic single tap

- The total length of the hose between the boiling-water tap and tank is only 70 cm. The tank must therefore be fitted close to the tap. Extension hoses are available in different lengths but are not normally required.
- The small fibre washers supplied with the tap rings are not required yet at this point. One will be used for connecting the tap and tank hose (see section E), the second one is a spare.



### 1. Tap through work top

Push the tap through the hole in the work top. Note: When fitting the tap in a 32 mm hole, the black plastic ring needs to be removed from the tap first.

### 2. Securing the tap

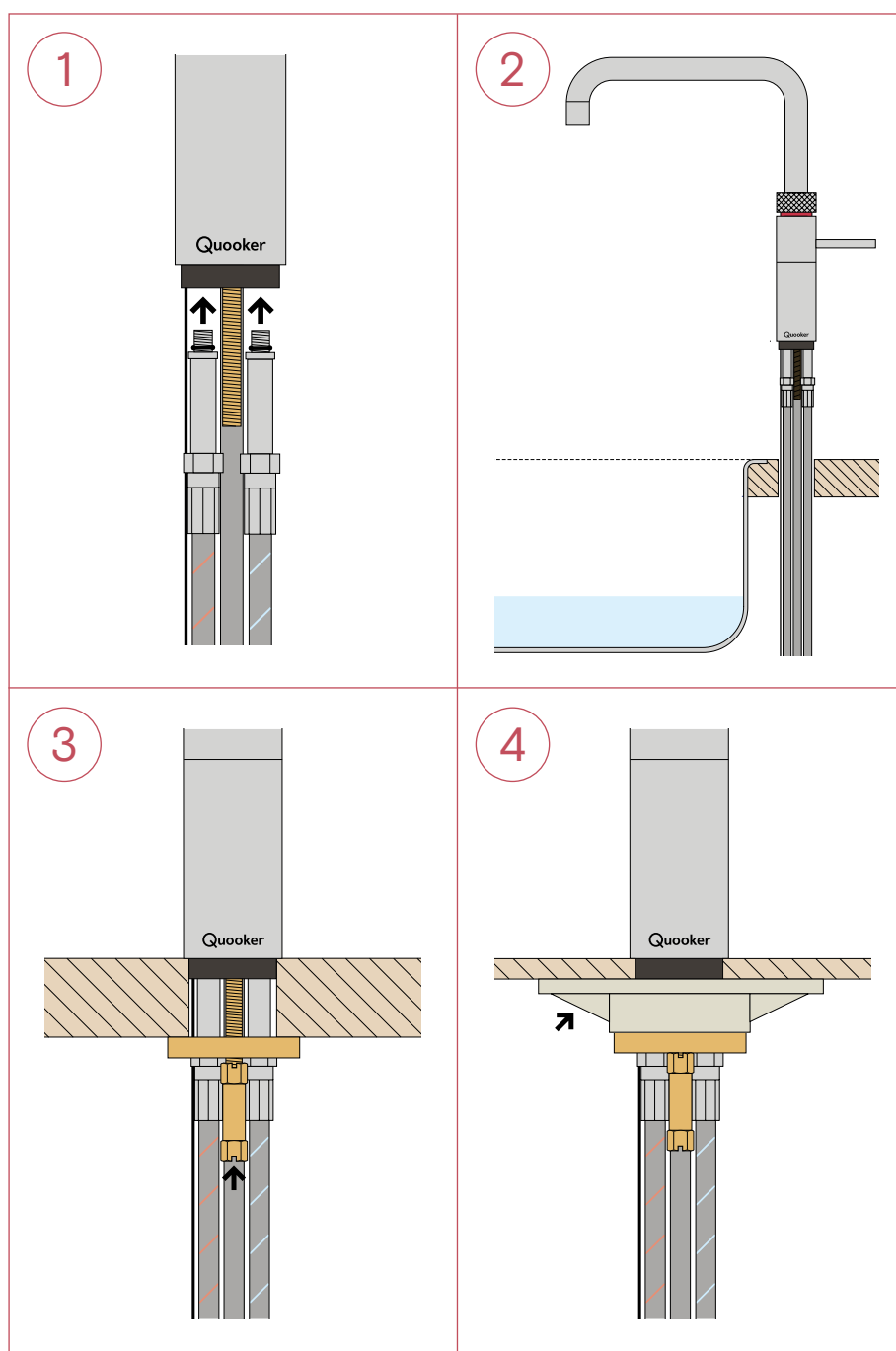
Set the tap to the desired position and secure it with the metal ring and screw ring supplied.

### 3. Securing tap screws

Tighten the screws in the screw ring.

# B<sub>2</sub>

## Fitting Fusion tap



### 1. Mount the hoses

Mount the hot water and cold water hoses on the tap.

### 2. Tap through work top

Push the tap through the hole in the work top.

### 3. Securing tap

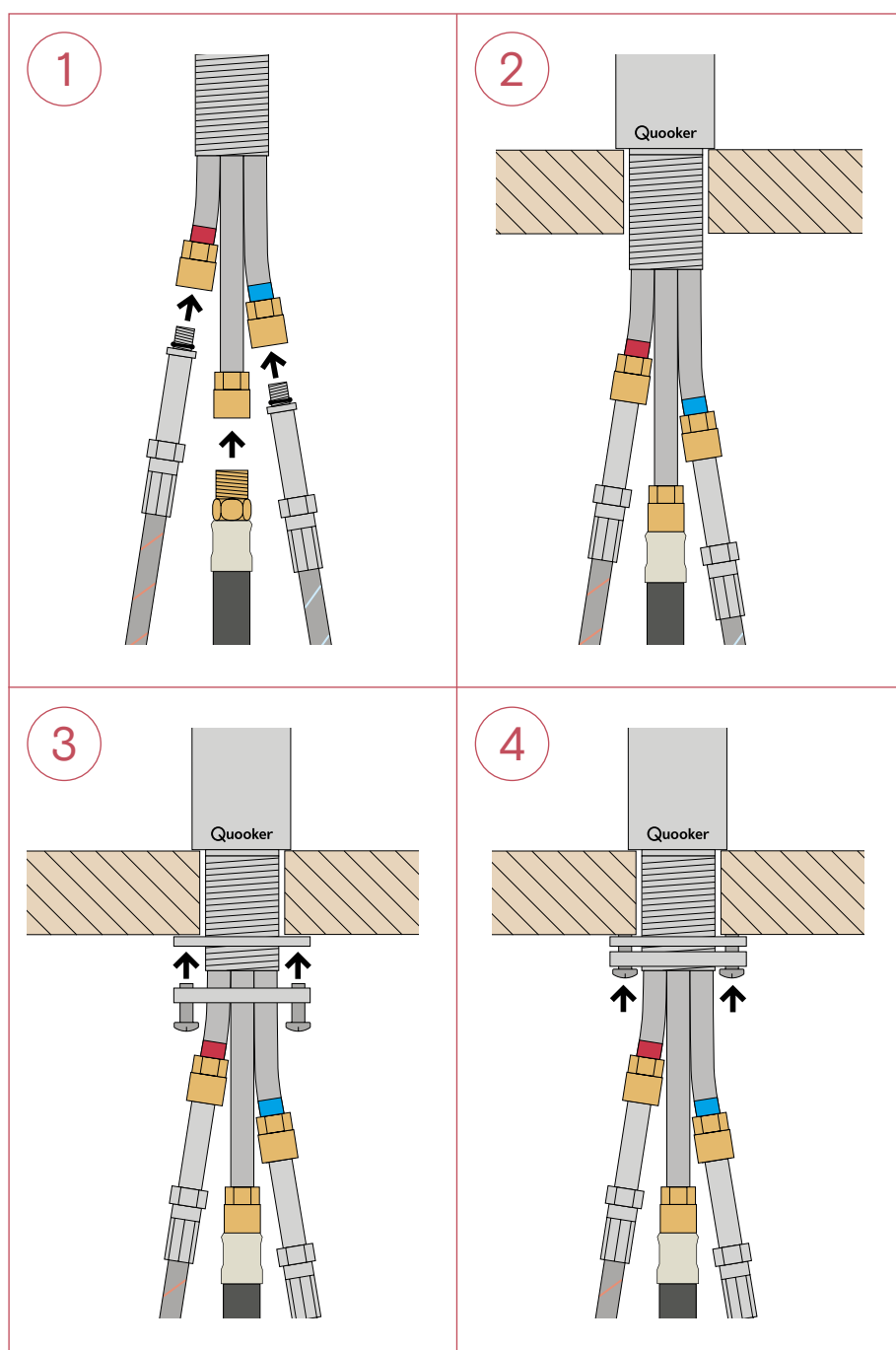
Position the brass fixing plate around the hoses. Screw the fixing nut onto the tap thread. Adjust the position of the tap to ensure that the Quooker logo is facing the user. When the handle is in the cold position, it will be parallel to the edge of the work top. Tighten the fixing nut with a pipe wrench, socket wrench or spanner.

### 4. Fitting to thin work top

When fitting to a thin work top, use the white tap support underneath the brass fixing plate.

# B3 Fitting Flex tap

- When installing the reservoir it is necessary to take into account that the Flex tap coupling must be able to move up and down freely.



## 1. Fit hoses

Fit the hot, cold and mixer water hose to the tap.

## 2. Tap through work top

Push the tap through the hole in the work top.

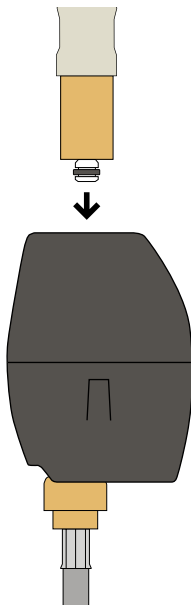
## 3. Tighten the brass plate

Put the tap in the required position and fully tighten the brass plate.

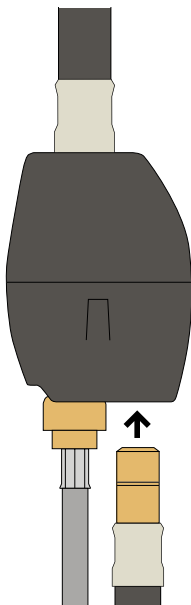
## 4. Securing tap screws

Tighten the screws in the screw ring.

5



6

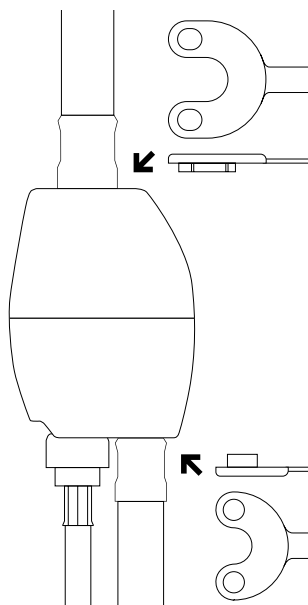


#### 5. Attach the coupling

Click the pull-out hose into the coupling's quick-release fitting while ensuring that the hose pillar is fully inserted.

#### 6. Fit the mixer water hose

Click the mixer water hose into the coupling's quick-release fitting while ensuring that the hose pillar is fully inserted.



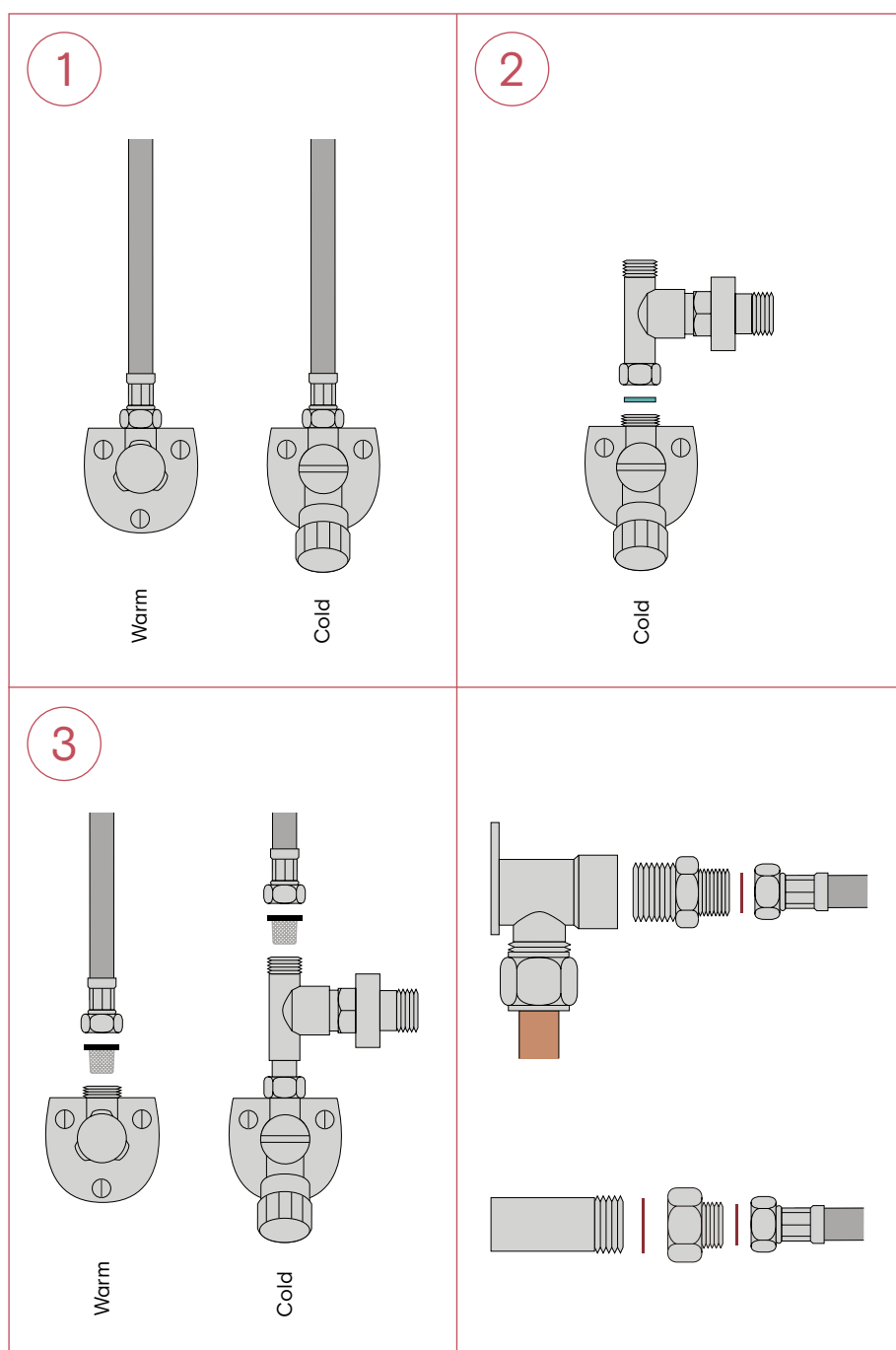
#### If necessary

Detach coupling. Use the quick-release tool to detach the mixer water hoses from the coupling. Press the quick-release tool flat against the coupling to hold it still. This enables the hose to be extracted.

# C

## Connecting water

- The Quooker operates under mains water pressure and must always be fitted to the water pipe with the supplied inlet valve.
- The Nordic single tap, the Fusion tap or the Flex tap must be installed according to the locally applicable regulations.



### 1. Shut off water

Before installation, shut off the angle stopcock or water supply to the main water tap. If necessary, fit supplied angle stopcock.

### 2. Connect inlet valve

Connect the inlet valve to the angle stopcock with the fibre washer.

### 3. Connect hot and cold water hose

Connect the hot water hose with the water filter to the angle stopcock. Connect the cold water hose with the hose filter to the inlet valve.

### If necessary

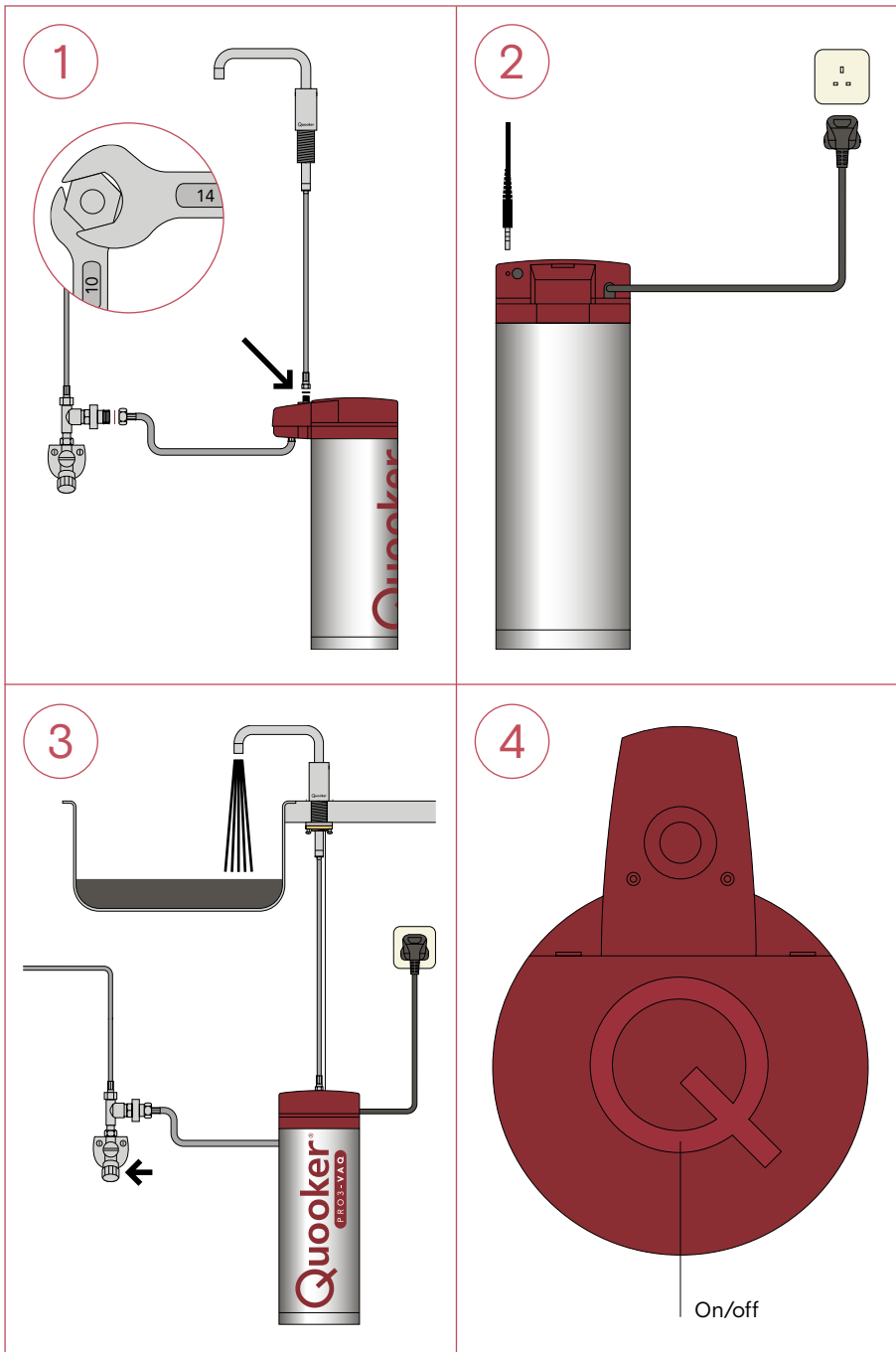
If only a G1/2" connection is present, use one of the G1/2" couplings with the supplied packing rings.



# D

## Connecting tank to tap

- The Quooker tank is supplied with a UK 3 pin plug and requires a standard 13 amp earthed socket.
- If the mains lead is damaged, it must be replaced by the manufacturer, their agent or a qualified technician.
- The 'Q' on the lid is the on/off switch.



### 1. Connecting tank and tap

Position the tank and connect to the inlet valve using the washer provided. Using size 10 and 14 socket spanners, connect tap hose to fitting at the top of the tank.

### 2. Electrical connection

Insert the LED cable into the relevant opening. Connect the tank to an earthed socket. Do not switch on until the tank is filled with water.

### 3. Filling tank

Open tap and angle stopcock. Check for leaks. Rinse Quooker for a few minutes, until the water is clear. The initial black colouring is activated carbon from the filter and completely harmless.

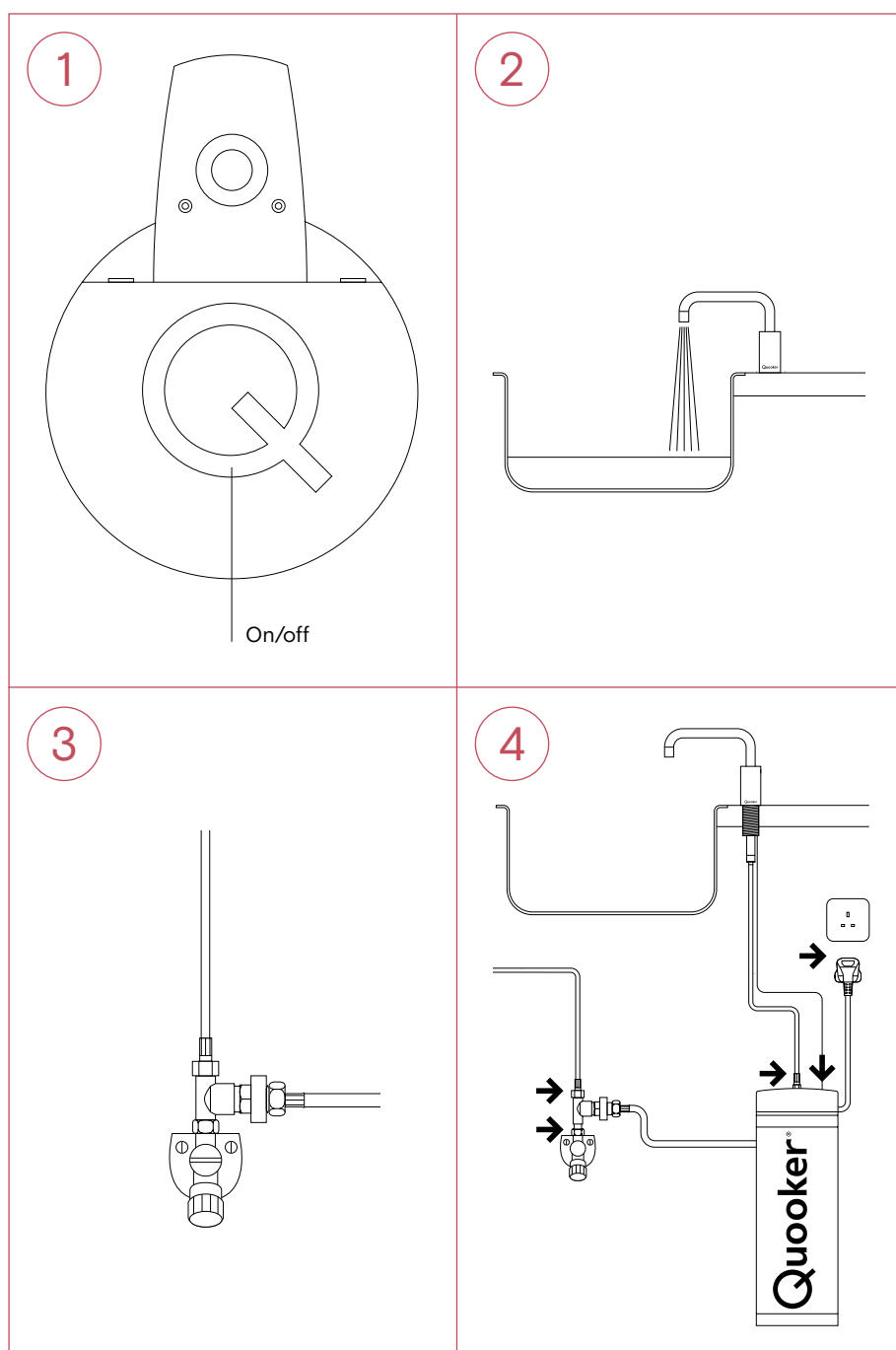
### 4. Switching on

Switch the tank on. After the Quooker has heated up, the entire content of boiling water must be flushed out once before use.

# E

## Disconnecting tank

- In case of service.



### 1. Switching off

Press the on/off switch at the top of the tank to switch it off. Do not unplug the tank from the socket yet.

### 2. Draining

Open the boiling-water handle of the tap and leave the water running until it is cold. Then close the tap again. Note: At first, the water is very hot.

### 3. Isolating

Close the main shut-off valve or the angle stopcock for cold water. Check that the Quooker is depressurized by opening the Nordic single tap or the boiling-water handle of the Fusion or Flex tap again. If it is depressurized, no water should flow out of it.

### 4. Disconnecting

Unplug the LED cable from the lid. Release the hose connections and pull the plug out of the socket. Remove the inlet combination and reconnect the cold water hose to the angle stopcock.



Quooker®

Quooker Hong Kong Limited  
10/F, YF Life Tower  
33 Lockhart Road  
Wanchai  
Hong Kong  
+852 2386 6326  
[info@quooker.hk](mailto:info@quooker.hk)  
[www.quooker.hk](http://www.quooker.hk)